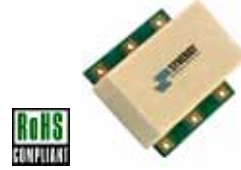


4 PORT 0°/180° HYBRID SURFACE MOUNT MODEL: SJ-K5

500 - 2200 MHz

FEATURES:

- ▶ **Wide Bandwidth**
- ▶ **Closely Controlled Phase/Amplitude Unbalance**
- ▶ **Small Size, Surface Mount**
- ▶ **RoHS Compliant**



SPECIFICATIONS (Rev. H 04/26/12)

Frequency	500 - 2200 MHz		
Insertion Loss *	I/O	dB (Typ.)	dB (Max.)
	Σ to C/D	0.9	1.7
	Δ to C/D	1.25	2.2
Amplitude Unbalance	Frequency (MHz)	dB (Max.)	
	500-2200	0.75	
	750-2170	0.5	
Phase Unbalance	Frequency (MHz)	Deg. (Max.)	
	500-2200	7°	
	750-2170	5°	
Isolation (dB)	I/O	Typ.	Min.
	Σ to Δ	35	18
	C to D	18	10
Input Power Rating	150 mWatt (Max.)		
Impedance	50 Ohms (Nom.)		
VSWR	1.5:1 (Max.)		
Operating Temperature Range	-40 to +85 °C		
<i>* Above 3 dB split loss.</i>			

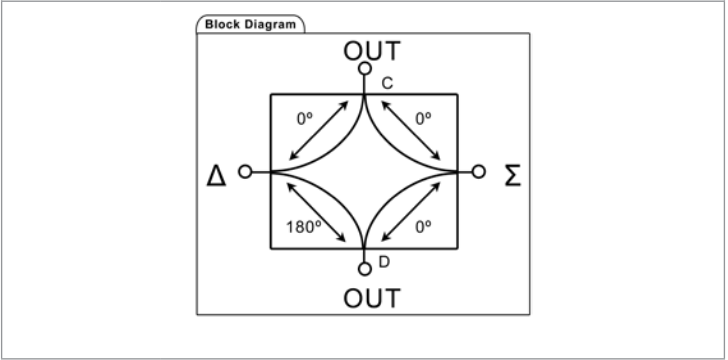
Package # 134LF

TOLERANCES ON THREE DECIMAL PLACES= ± 0.015
PACKAGE MOUNTING: SEE APPLICATION NOTE AN7200 & AN7300

PORT IDENTIFICATION

Sum (Σ)	Delta (Δ)	0° Output (C)	0°/180° Output (D)	GND
1	6	4	3	2,5

For 3 port operation, terminate either Σ or Δ input into 50 Ohms.

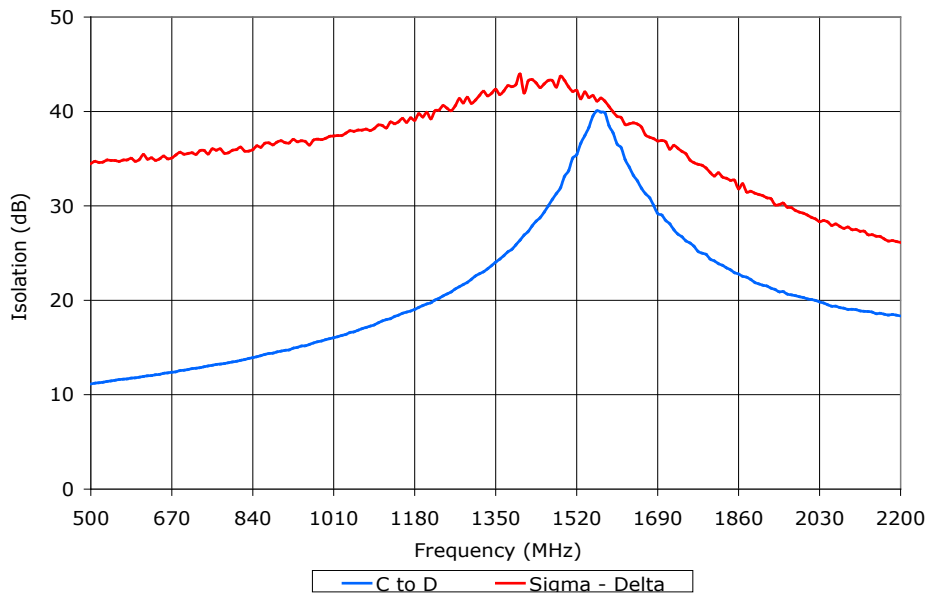
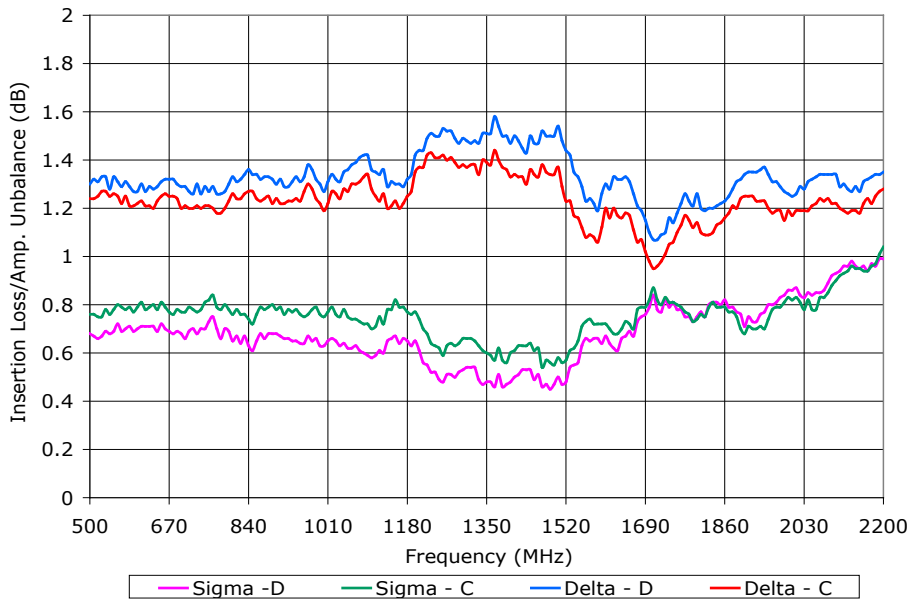


4 PORT 0/180° HYBRID SURFACE MOUNT MODEL: SJ-K5

500 - 2200 MHz

Data @ 25°C

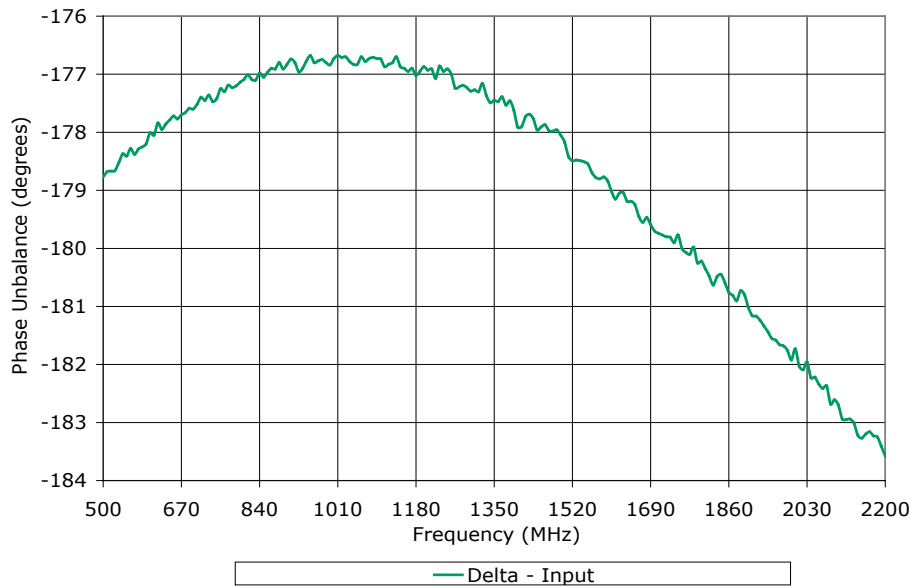
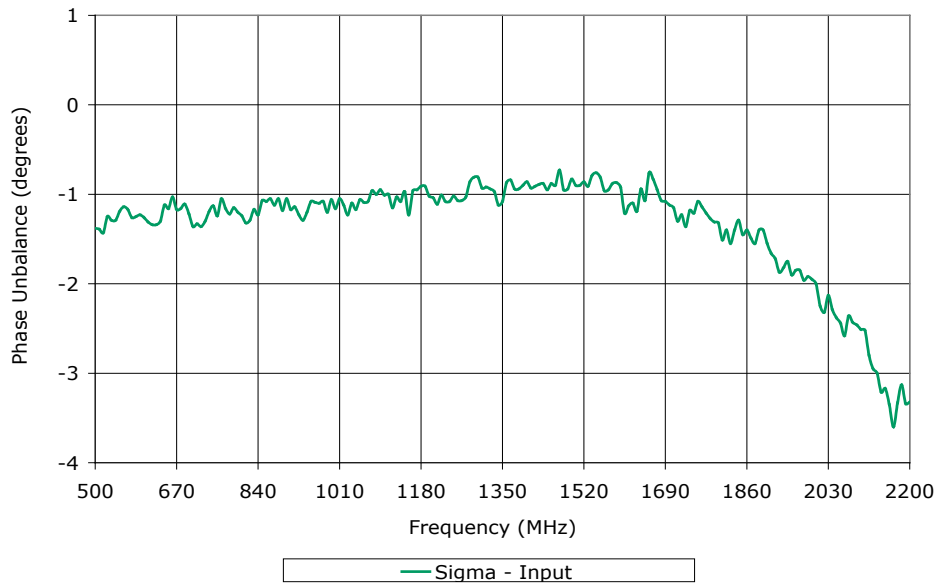
PERFORMANCE PLOTS



4 PORT 0/180° HYBRID SURFACE MOUNT MODEL: SJ-K5

500 - 2200 MHz

Data @ 25°C

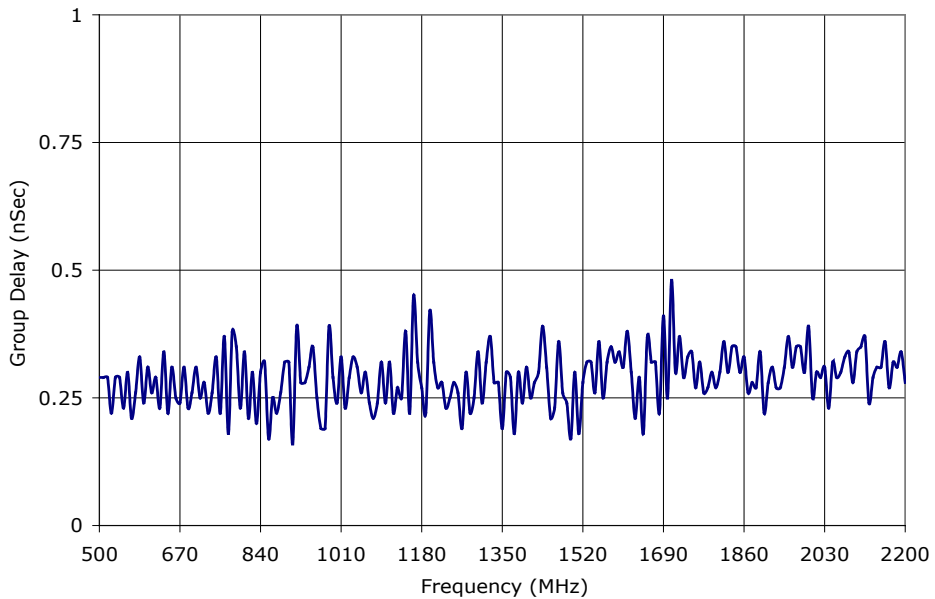
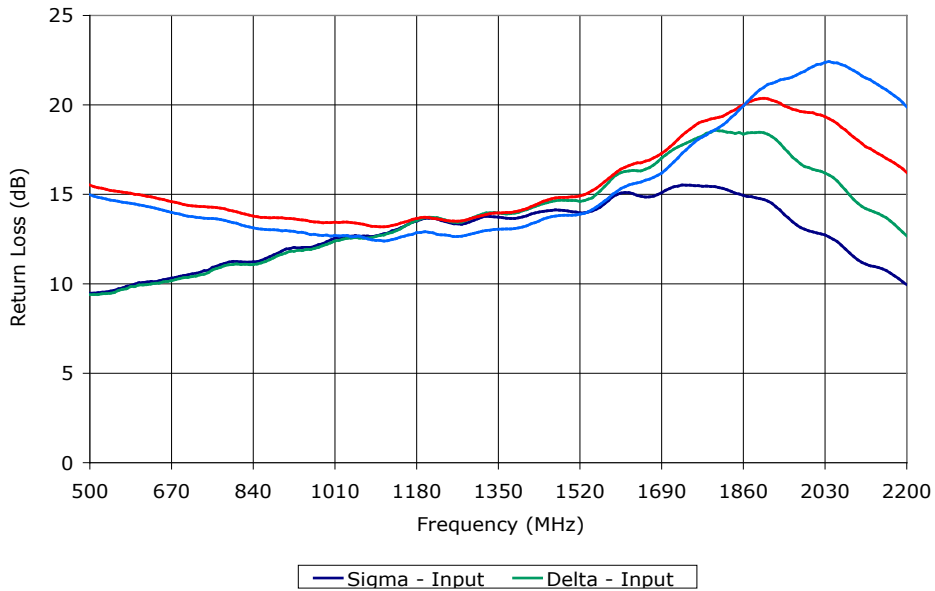


PERFORMANCE PLOTS

4 PORT 0/180° HYBRID SURFACE MOUNT MODEL: SJ-K5

500 - 2200 MHz

Data @ 25°C



PERFORMANCE PLOTS