

TRIPLE-BALANCED MIXER

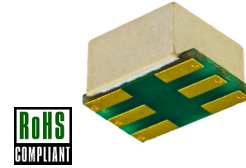
SURFACE MOUNT MODEL: SLD-K5

WIDE BANDWIDTH

5 - 1000 MHz

FEATURES:

- ▶ Multi-Octave Bandwidth
- ▶ Schottky Diode Mixer
- ▶ Low Conversion Loss
- ▶ High Interport Isolation
- ▶ Small Size, Surface Mount
- ▶ Lead Free Patented REL-PRO® Technology



SPECIFICATIONS (Rev. C 08/06/09)

Frequency	LO/RF (MHz)	IF (MHz)	
	5 - 1000	5 - 1000	
Conversion Loss (dB)	Freq. (MHz)	Typ.	Max.
	10 - 500	6.5	8.0
	5 - 1000	7.5	9.5
Isolation (dB)	Freq. (MHz)	LO/RF (Typ.)	LO/IF (Max.)
	5 - 50	35/20	30/20
	50 - 500	40/30	30/20
	500 - 1000	30/23	25/20
LO Power	+10 dBm (Nom.)		
1 dB Comp. Pt.	+5 dBm (Typ.)		
Input IP³	+18 dBm (Typ.)		
Impedance	50 Ohms (Nom.)		
Operating Temperature Range	-20 to +70 °C		

Package # 159LF

REL-PRO® Patent No. 7,612,296

TOLERANCES ON THREE DECIMAL PLACES= ± 0.015
PACKAGE MOUNTING: SEE APPLICATION NOTES AN7200 & AN7301

PORT DESIGNATION			
RF	LO	IF	GND
4	1	5	All Others

TRIPLE-BALANCED MIXER

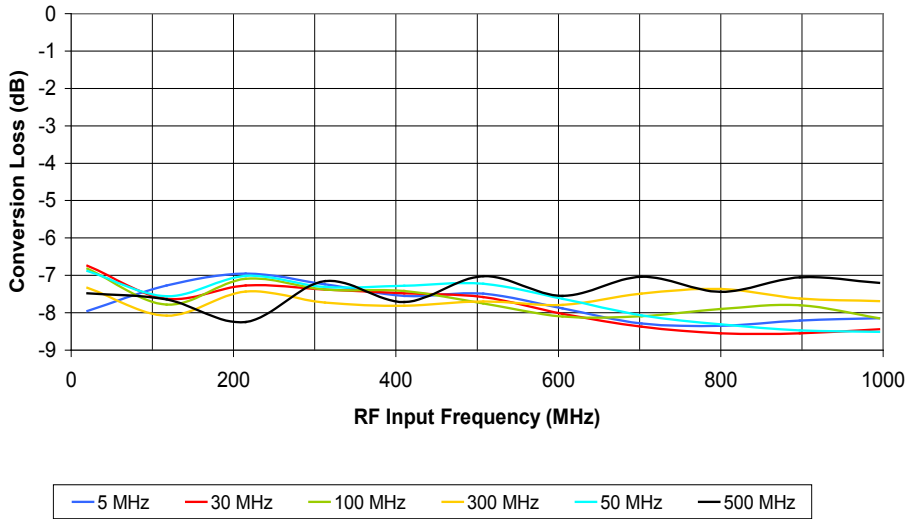
SURFACE MOUNT MODEL: SLD-K5

WIDE BANDWIDTH

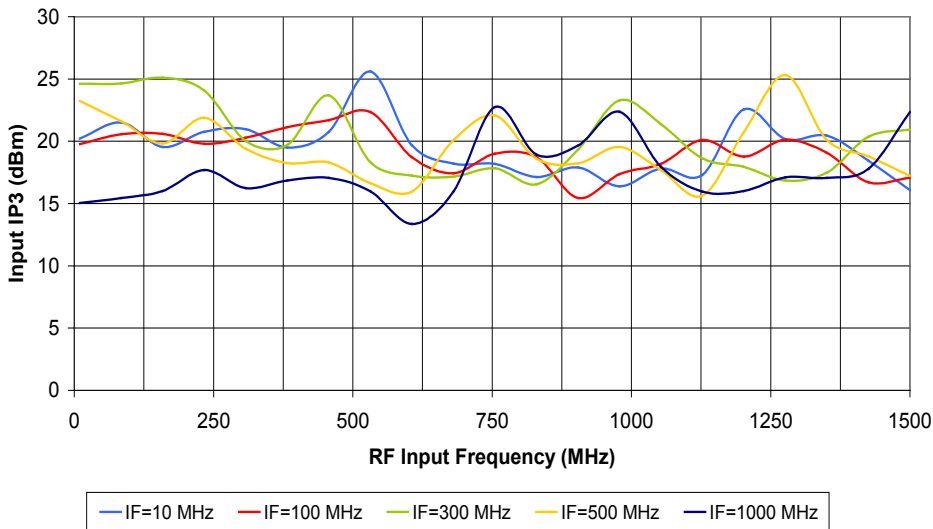
5 - 1000 MHz

PERFORMANCE PLOTS

LO=+10 dBm, RF=0 dBm, IF=LO-RF



LO=+10 dBm, RF=-10 dBm, IF=LO-RF



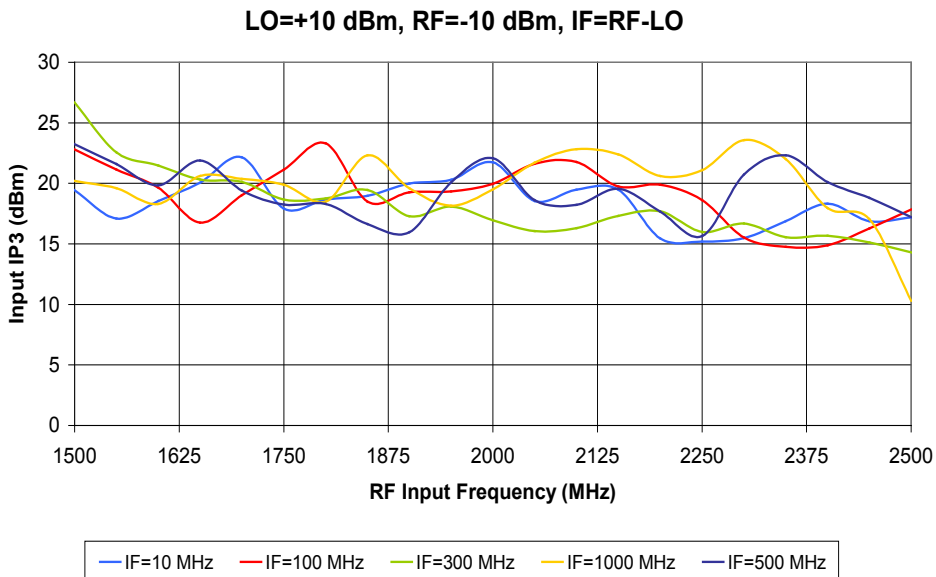
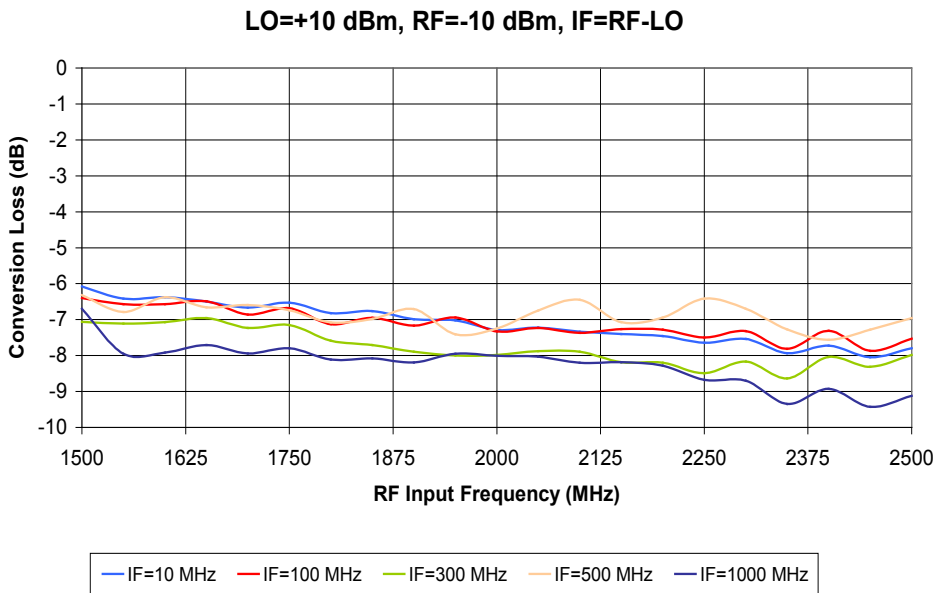
TRIPLE-BALANCED MIXER

SURFACE MOUNT MODEL: SLD-K5

WIDE BANDWIDTH

5 - 1000 MHz

PERFORMANCE PLOTS



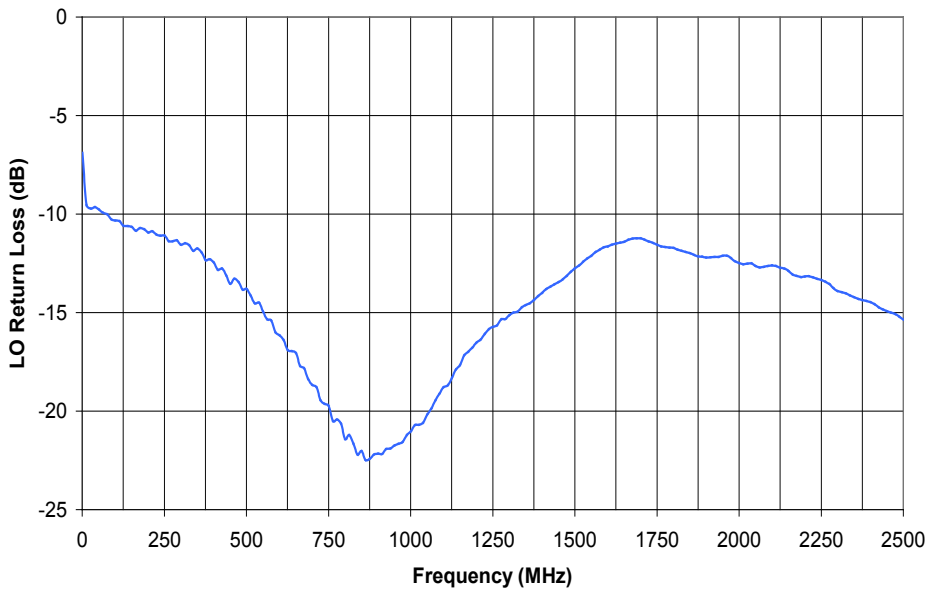
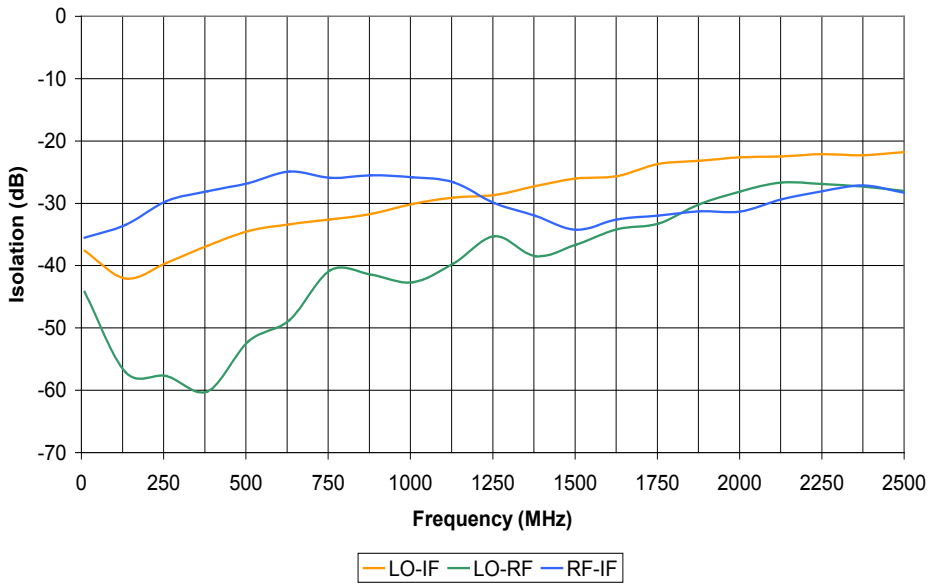
TRIPLE-BALANCED MIXER

SURFACE MOUNT MODEL: SLD-K5

WIDE BANDWIDTH

5 - 1000 MHz

PERFORMANCE PLOTS



TRIPLE-BALANCED MIXER

SURFACE MOUNT MODEL: SLD-K5

WIDE BANDWIDTH

5 - 1000 MHz

PERFORMANCE PLOTS

